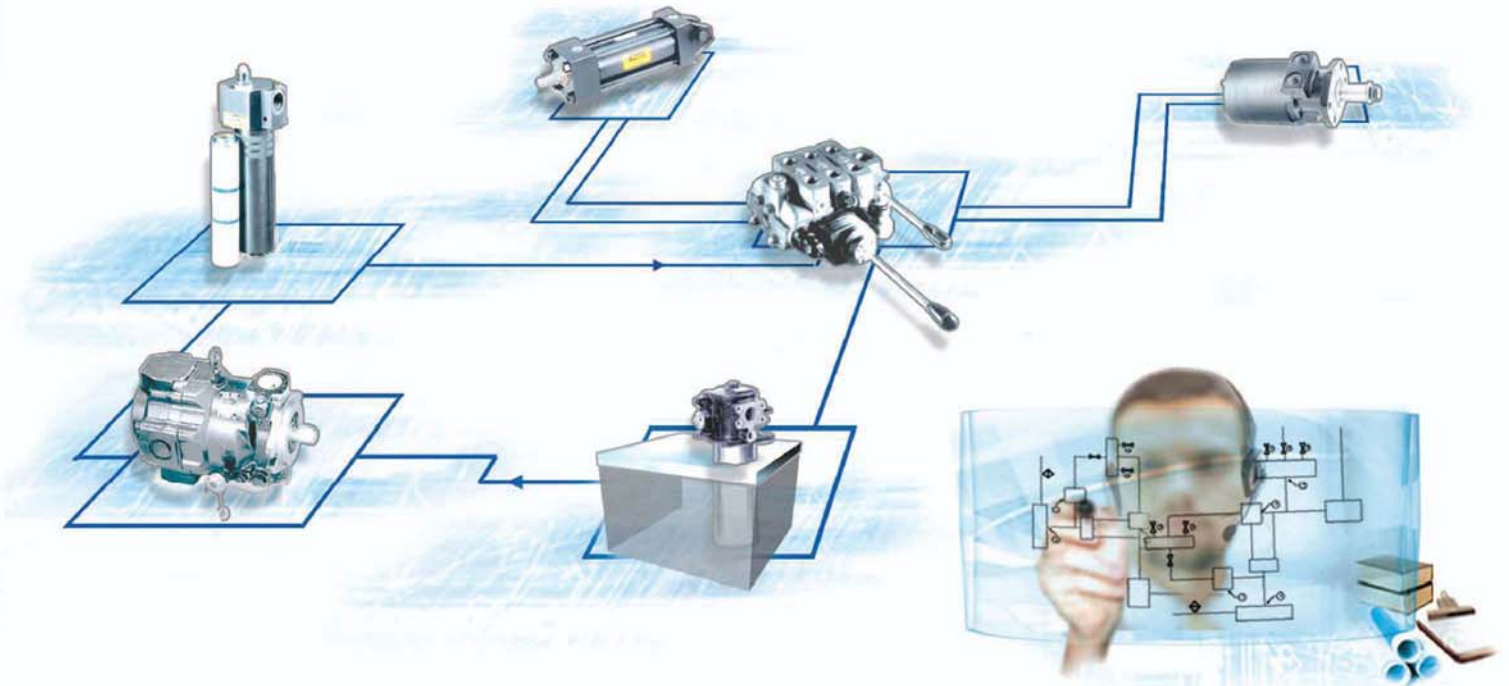


# **HYSECO**

**FLUID SYSTEMS LTD.**

**Serving Industries Since 1968**

#1-7399 River Road  
Delta, BC, Canada  
V4G 1B2  
Ph: 604-940-8865  
Fax: 604-940-8802  
[www.hyseco.com](http://www.hyseco.com)



- Sales
- Repairs
- Systems
- 24 Hr Emergency Service



**Parker Motion Control.**  
Hydraulic Pumps, Motors,  
Valves, Accumulators,  
Cylinders and Accessories.

**Parker Fluid Connectors.**  
Hydraulic Hose and Fittings,  
Tube Fittings, Quick Couplers,  
Adapters (Imperial and Metric).

**Parker Filtration.**  
Filters, Elements, Filter Carts,  
Oil Purification Systems,  
Fluid Monitoring.

**Parker Pneumatic Automation.**  
FRL's, Valves, Cylinders,  
Dryers and Parframe.



High Force Hydraulic Tools, Cylinders, Pumps,  
Valves, Bolt Tensioning, Torque Wrenches,  
Workholding Systems, and Synchronous Lift  
Systems.



Hydraulic Cylinders, Pumps,  
Power Risers, Mechanical Jacks,  
Valves and Torque Wrenches.

**\*Authorized Warranty Service Center**



Serving Industries Since 1968



Pneumatic Equipment Components



Rotary Positive Displacement 3-Screw and Gear Pumps



Industrial Coolers and Heat Exchangers



Radial Piston Pumps, Drive Motors, Control Valves and Cylinders



SAE Hydraulic Four Bolt Flange Fittings & Ball Valves Carbon and Stainless Steel



Hydraulic and Pneumatic flow Meters



Pipe, Hose and Tube Clamps Weld, Bolt Down and Rail Mount Styles



Design and Manufacture Hydraulic Valve Manifolds



D.I.N. Electrical Connectors, Timers and Accessories



Flexible Drive Couplings, Pump/Motor Mounts, Alignment Couplers



Air Driven Pumps, Intensifiers and Boosters



Hydraulic Gear Pumps and Motors



Design and Manufacture Hydraulic Valve Manifolds



AC-DC Hydraulic Power Units



Hydraulic Ball Valves and Accessories



Test Couplings



High Force Hydraulic Tools, Cylinders, Valves, Bolt Tensioning & Torque Wrench



Hydraulic Quick Couplers



Sensors for Flow, Temperature, Speed and Pressure



Hydraulic Torque Wrenches and Accessories



Intake Immersion Heaters



Full Line of Pressure and Temperature Gauges